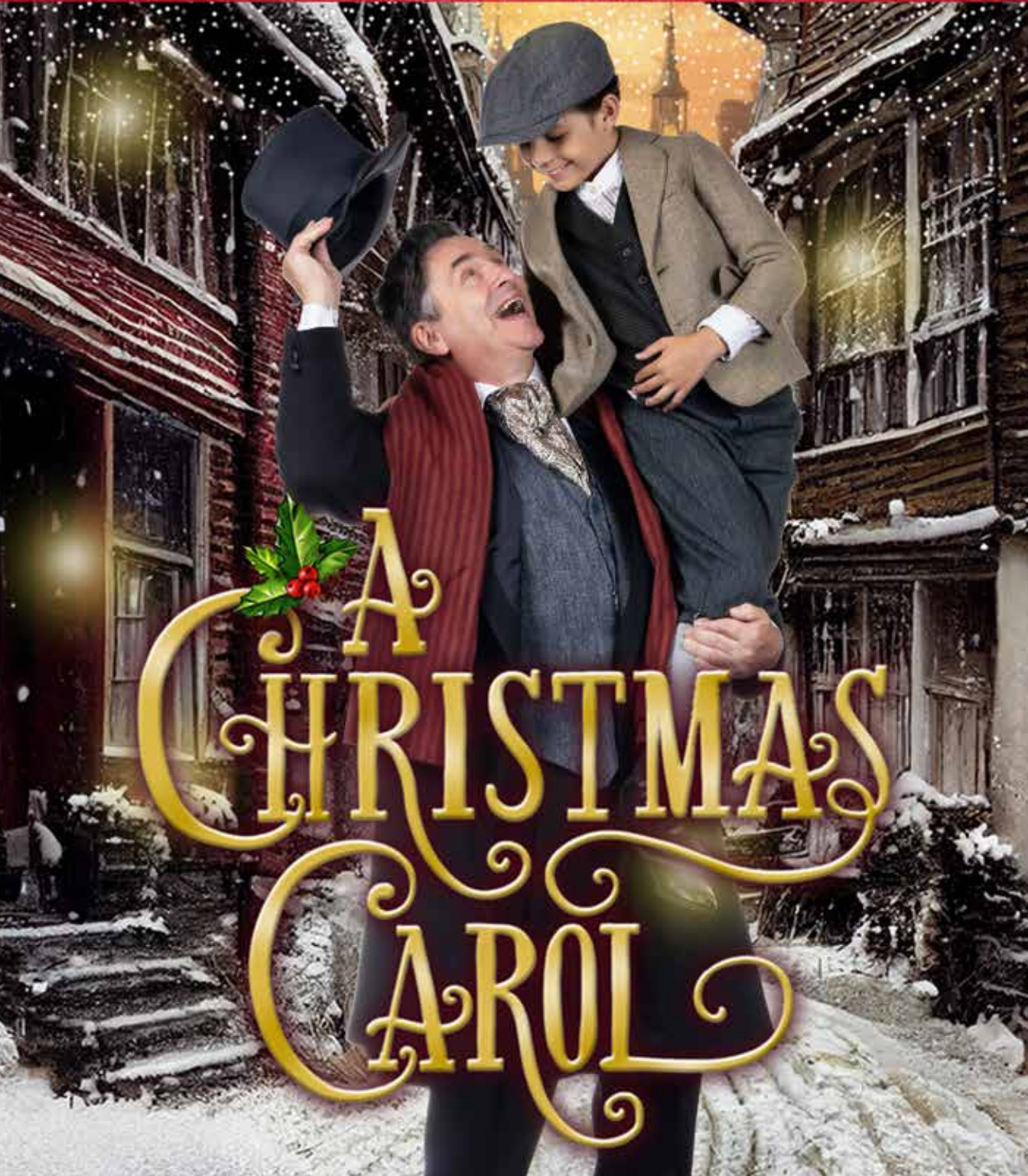


NASHBILL

NASHVILLE'S PLAYBILL

NASHVILLE REPERTORY THEATRE
PRESENTS



A CHRISTMAS CAROL

2023-24 SEASON

EXPERIENCE A NEW ERA OF BRAVE NEW ART
WHERE FEARLESS ARTISTS MEET ADVENTUROUS AUDIENCES

SEPTEMBER 6 & 7
COMPAGNIE KÄFIG
(FRANCE)
PIXEL

OCTOBER 5
AT 5PM
LITTLE AMAL

Free in Centennial Park

OCTOBER 20 & 21
JOHN CAMERON MITCHELL & STEPHEN TRASK

THE HEDWIG STAR SINGS OUT FOR LGBTQ JUSTICE!
A Benefit for ACLU of Tennessee

OCTOBER 28
FABLE CRY

Festival of Ghouls:
HALLOWEEN INFERNO

NOVEMBER 9-11
RENNIE HARRIS
PRESENTS
ROME & JEWELS

NOVEMBER 30 - DECEMBER 10
GEOFF SOBELLE
FOOD

"Eye-popping"
— *The Guardian*

FEBRUARY 2 & 3
SHAMEL PITTS/ TRIBE

BLACK HOLE: TRILOGY & TRIATHLON

FEBRUARY 29 - MARCH 2
MAZELFRETEN
(FRANCE)
RAVE LUCID

APRIL 6
OZ'S 10TH ANNIVERSARY BASH

SHARE YOUR EXPERIENCE
#OZARTS

APRIL 19 & 20
HAMID RAHMANIAN
SONG OF THE NORTH

MAY 16-18
BRAVE NEW WORKS LAB 2024

MAY 30 - JUNE 1
OONA DOHERTY
(NORTHERN IRELAND)
NAVY BLUE



TICKETS FROM \$20 | PACKAGES FROM \$85
SCAN THE QR CODE OR VISIT OZARTSNASHVILLE.ORG

NASHBILL

NASHVILLE'S PLAYBILL



We love the performing arts, so when we were asked to consider producing playbills for local arts organizations, we were honored. Those arts organizations desired to be produced by a local organization — and one that they trusted. The *Nashville Scene* has been covering the arts for 35-plus years, and our team is passionate about live performance and visual art. It made perfect sense.

Since the 2021-2022 season, we've produced programs for many of Nashville's established arts organizations. Each year, we eagerly await details about which touring Broadway productions will come through town, what local actor got the lead in the Nashville Rep's upcoming production, what Gary Hoff's next stage design might look like, what brilliance has John Hoopes set on display at the Nashville Opera, who will conduct or solo at the Nashville Symphony's *Rite of Spring* performance, what's in store at the new home of Studio Tenn at the Factory. We can't wait to know — we're nerds about this stuff. So, yes, we here at FW Publishing are a perfect match to be a local producer of these playbills.

As of this season, you'll now enjoy *NashBill* Nashville's Playbill, our new moniker for the playbills and programs we produce for Nashville Symphony, Nashville Opera, Nashville Rep and Studio Tenn productions. Our hope is that you share our exuberance about upcoming shows and productions as you peruse the pages of your new publication. You'll read exciting details about the show you're about to see, and find interesting tidbits from the *Scene* and *Nfocus* arts contributors in our Take Note section. You'll find Featured Gallery pages and further information about the local arts scene and how to support our growing arts community. And when you want to know even more, you can always turn to NashvilleScene.com for reviews, previews, interviews, Critics' Picks, listings and further highlights, every day.

So, welcome to the 2023-2024 performing arts season. We can't wait to enjoy these performances while seated beside you. That's us down front, clapping the loudest, squealing with delight, singing along (sorry, not sorry), and yes, standing to applaud the longest.

Cheers to a great season ahead,

Mike Smith
President, FW Publishing

FW PUBLISHING

EDITORIAL

Nashville Scene arts editor
Laura Hutson Hunter and
Nashville Scene contributors

ART DIRECTOR

Tracey Starck

SALES OPERATIONS MANAGER

Chelon Hasty

DISTRIBUTION DIRECTOR

Gary Minnis

ADVERTISING CONSULTANTS

Carla Mathis, Heather Cantrell Mullins,
Jennifer Trsinar, Keith Wright, Teresa
Birdsong, Allie Muirhead, Alissa Wetzel,
Maddy Fraiche and Kailey Idziak

ADVERTISING ASSOCIATES

Audry Houle and Jack Stejskal

ASSOCIATE PUBLISHER

Michael Jezewski

PUBLISHER

Mike Smith

PRESIDENT

Mike Smith

CFO

Todd Patton

CREATIVE DIRECTOR

Elizabeth Jones

IT

John Schaeffer

For advertising information
contact Michael Jezewski at
mjezewski@fwpublishing.com

FWPublishing, LLC

OWNER

Bill Freeman

210 12th Ave South, Suite 100
Nashville, TN 37203
615-244-7989

FWPUBLISHING

NashvillePost *nFOCUS* **TheNEWS**
TheNEWSin.com

dream.
design.
build.



EVERY HOME SHOULD BE A CASTLE
CUSTOM HOMES / REMODELING / INTERIOR DESIGN
CASTLEHOMES.COM 615 309 8200

Executive Director
DREW OGLE



Artistic Director
MICAH-SHANE BREWER

A CHRISTMAS CAROL

Based on the novella by
CHARLES DICKENS

Adapted by
MICAH-SHANE BREWER

Musical arrangements by
GREGG PERRY

New music by
MICAH-SHANE BREWER

Director
MICAH-SHANE BREWER

Music Director
GREGG PERRY

Choreographer
SHABAZ UJIMA

Scenic Designer
GARY C. HOFF

Costume Designer
MELISSA DURMON

Lighting Designer
MICHAEL BARNETT

Sound Designer
MZ THEATRICAL

Projections Designer
DJ PIKE

Stage Manager
RANDY LAWSON

Production Manager
ISAAC KRISPIN

Technical Director
CHELSEA FLOWERS

Props Manager
LAUREN YAWN

This theatre operates under an agreement with Actors' Equity Association, the union of professional actors and stage managers in the United States.

Nashville Repertory Theatre is a member of TCG, Theatre Communications Group, the national organization for the American theatre.



Photography, videotaping or other video or audio recording of this production is strictly prohibited.

EXECUTIVE DIRECTOR'S NOTE



Welcome to *A Christmas Carol*, the second production of our 39th annual season. We are so glad you are here!

Over the years, Nashville Rep has presented many different versions of this

beloved tale. The production you are about to experience was created right here in Nashville by our Artistic Director Micah-Shane Brewer. He and his team of local artists have spent the last several months blending Dickens' story, familiar and new characters, and original and traditional holiday carols into this treat for the family. It is our gift to our community.

Across the country, millions of people will see some version of *A Christmas Carol* this month. It has been adapted in countless versions for the stage as well as the screen. This story of a redeemed heart, rekindled family bonds, and a newfound spirit of generosity never fails to move me.

I am also moved by the generosity of our Nashville Rep family of patrons and sponsors. Nationally, approximately 30% of all philanthropic gifts are made during the holiday season, with a full 10% happening in just the

last three days of the year. We see the same statistics here at the Rep.

The gifts made during this period are invaluable to our work. They support not only our MainStage season, but also transformational educational offerings such as our Arts Build Communities program in the school and court systems. They also support our engagement programs such as REPALoud staged readings. We are able to offer both our educational and engagement programs for free because of the gifts we receive during the holiday season.

If you are already a member of the Rep family, we thank you. If you are not and would like to join the hundreds of community members who believe in the power of the arts in middle Tennessee, please give us a call at 248-219-4841 or email laura@nashvillerep.org. We will help spread your generosity throughout our community.

Thank you once again for being here. I wish you the best of holiday wishes and a joyous new year!

Drew Ogle
Executive Director

NASHVILLE REP

BE BRAVE!

INDECENT
FEBRUARY 2-11, 2024

The Color Purple
APRIL 5-14, 2024

POTUS
MAY 10-19, 2024

SUBSCRIBE AND SAVE

NASHVILLEREP.ORG/TICKETS | 615-872-4040

CHEERS TO THE ARTS!

FWPublishing is proud to produce the playbills for Nashville Repertory Theatre, Nashville Symphony, Nashville Opera and Studio Tenn, now under the moniker NashBill- Nashville's Playbill.

Please join us in our pages, online or at our events.



For more information about advertising in the playbills or any of our media, contact Mike Smith at msmith@fwpubilshing.com

FWPUBLISHING.COM

DIRECTOR'S NOTE



Dear Friends,

Welcome back to the Rep and our brand new production of *A Christmas Carol*! We've been preparing many months for this, and we're honored that you've chosen to spend time with us this holiday season.

I love this time of year! It's filled with excitement and anticipation as we gather to celebrate the season. There's a special feeling in the air, and my inner child lights up when I see the decorations, hear the music, visit with family and friends, and experience the joy that this season brings. However, it always seems that there's too much to do and not enough time for everything. With the hustle and bustle of this busy time, I find myself wanting to slow down to savor each and every moment.

Holiday traditions connect us in the present moment to significant and special memories of our past, and *A Christmas Carol* has been part of my holiday tradition for as long as I can remember. Every year, I revisit this story, and every year it grows nearer and dearer to my heart.

Charles Dickens wrote *A Christmas Carol* in the winter of 1843, when he was struggling financially, and it became an instant success. It was very much a reflection of that particular moment in time and the issues of that day. Dickens originally intended to write a pamphlet entitled "An Appeal to the People

of England on behalf of the Poor Man's Child." He had just read the government report on the harsh child labor conditions in the United Kingdom. It led him to create a story with a contemptible central character.

It's ironic that *A Christmas Carol* became his most beloved story, as it was written very early in his career. He would go on to write many more works, but the tale of Ebenezer Scrooge would become one of the most popular stories ever told. Since 1843, the short novel has never gone out of print.

A Christmas Carol is far more than just a classic holiday story; it is a poignant and transformative reflection of our shared human experience and an enduring reminder of the power of empathy and connection. It asks all of us to examine our past decisions, our present opportunities, and our potential future.

How can we become more compassionate people? How are we making a difference in the lives of those around us? Let's face it: the world can look pretty dark and grim these days, and we have a job to do by bringing as much light and peace to those around us as we can.

This story humbles me, and my hope is that this performance not only entertains you, but inspires you to embrace the true spirit of the season.

God Bless Us, Everyone!

Micah-Shane Brewer
Artistic Director

Your contributions allow Nashville Rep's artistic programs & community to thrive. As a non-profit organization, our work is only possible with your support.

Your support matters! Ticket sales cover only 32% of our budget. With your support, our average ticket price is \$48. Without your support, our average ticket price would be over \$192.



DONATE HERE!
or visit nashvillerep.org/donate





A DIFFERENT KIND OF HOTEL IN *Nashville*

Show your playbill and receive a
15% discount at our restaurant, Henley.



HENLEY

MODERN AMERICAN BRASSERIE

2021 Broadway, Nashville, TN 37203 | 615.340.6376 | Aertsonhotel.com | #AertsonHotel



A PLACE FOR EVERYONE

Nashville Repertory Theatre is committed to creating an equitable, diverse, and inclusive organization and community. We can only maintain excellence by recruiting and retaining a diverse group of artists, audiences, supporters, staff, and board, and by sharing our resources in a way that makes theatre accessible to all ages, backgrounds, citizenships, citizens of national origin, disabilities, education levels, gender identities, geographical locations, languages, military experiences, sexual orientations, races, religions, socioeconomic statuses, work experiences, and historically excluded communities.

LAND ACKNOWLEDGMENT

We acknowledge that the land on which we meet is the original homeland of the Cherokee Nation, also known as the Ani-Yun-Wiya or "real-people." We also acknowledge the Chickasaw, Shawnee, & Yuchi tribal nations. We stand upon a painful history of genocide and forced removal from this territory, and honor and respect the many diverse Indigenous peoples still connected to this land on which we gather. The art that we create together is in full ownership of this history.

CAST AND PRODUCTION STAFF

CAST

Ebenezer Scrooge.....	MATTHEW CARLTON *
Bob Cratchit.....	ERIC D. PASTO-CROSBY *
Grocer's Wife.....	IVORY BODNAR
Mrs. Lewis.....	KRIS SIDBERRY *
Nephew Fred.....	MAX FLEISCHHACKER
Mr. Blakeley.....	ETHAN H. JONES
Mrs. Philpot.....	DENICE HICKS
Elizabeth Cratchit.....	JENNIFER WHITCOMB-OLIVA
Mrs. Kimball.....	DEB MEEKS
Jacob Marley.....	BRIAN WEBB RUSSELL *
Ghost of Christmas Past.....	KRIS SIDBERRY *
Scrooge's Father.....	BRIAN CHARLES ROONEY *
Fan.....	ELLE WESLEY
Young Scrooge.....	ALEX HILLAKER
Dick Wilkins.....	BEN FRIESEN
Ebenezer.....	EVAN FENNE
Mr. Fezziwig.....	GALEN FOTT *
Mrs. Fezziwig.....	DENICE HICKS
Belle.....	IVORY BODNAR
Fiddler.....	MAX FLEISCHHACKER
Ghost of Christmas Present.....	BRIAN CHARLES ROONEY *
Martha Cratchit.....	SHELBY TALBERT
Peter Cratchit.....	DAVID LONG III
Belinda Cratchit.....	ELLE WESLEY
Henry Cratchit.....	ALEX HILLAKER
Alice Cratchit.....	CAROLINE HENRY AND ABBY HOOPER
Tiny Tim Cratchit.....	DAVID MATTHEW CLARK AND EMILY HOOPER
Sarah.....	CHRISTINE TOOLE
George.....	BRIAN WEBB RUSSELL *
Victoria.....	DEB MEEKS
Ruth.....	IVORY BODNAR
Topper.....	EVAN FENNE
Hannah.....	DENICE HICKS
Thomas.....	ETHAN H. JONES
Mary.....	KRIS SIDBERRY *
Ghost of Christmas Future.....	BEN FRIESEN
Ol' Joe.....	GALEN FOTT
Ms. Kendall.....	CHRISTINE TOOLE
Mrs. Dilbur.....	DEB MEEKS
Undertaker's Man.....	ETHAN JONES
John.....	EVAN FENNE
Caroline.....	IVORY BODNAR
Ensemble.....	IVORY BODNAR, DAVID MATTHEW CLARK, EVAN FENNE, MAX FLEISCHHACKER, GALEN FOTT*, BEN FRIESEN, DENICE HICKS, CAROLINE HENRY, ALEX HILLAKER, ABBY HOOPER, EMILY HOOPER, ETHAN H. JONES, DAVID LONG III, DEB MEEKS, ERIC D. PASTO-CROSBY*, BRIAN CHARLES ROONEY*, BRIAN WEBB RUSSELL*, KRIS SIDBERRY*, CHRISTINE TOOLE, SHELBY TALBERT, ELLE WESLEY, JENNIFER WHITCOMB-OLIVA

CAST AND PRODUCTION STAFF

PRODUCTION STAFF

Director	MICAH-SHANE BREWER
Music Director/Arranger	GREGG PERRY
Choreographer	SHABAZ UJIMA
Scenic Designer	GARY C. HOFF
Costume Designer	MELISSA DURMON
Lighting Designer	MICHAEL BARNETT**
Sound Designer	MARK S. ZUCKERMAN
Projection Designer	DJ PIKE
Stage Manager	RANDY LAWSON
Dialect and Voice Coach	KATIE CUNNINGHAM
Production Manager	ISAAC KRISPIN
Technical Director	CHELSEA FLOWERS
Props Artisan	LAUREN YAWN
Assistant Director	YOLANDA TREECE
Assistant Stage Managers	EVE PETTY, HANNAH BONER
Artistic Associate	YOLANDA TREECE
Dramaturg	ERYNN BARRETT
Child Supervisor	GRACE WEAVER
Carpenters	ELIZABETH BURROW, JOSHUA MAST
Wardrobe Supervisor	KAITLIN STEER
Dressers	BONNY GREEN, ELIZABETH JOHNSON, GRACE MONTGOMERY, MEREDITH SCHIELTZ
Wig Stylists	MELISSA K. DURMON, MEREDITH SCHIELTZ, CAPRI BIRANGARDI, WIG STUDENTS AT THE ACADEMY OF MAKEUP ARTS
Draper	BONNY GREEN
Stitchers	MELISSA K. DURMON, DENESE RENE' EVANS, BONNY GREEN, ALEXIS GRIGSBY, ELIZABETH JOHNSON, SUSIE LOGAN, KAITLIN STEER, LAUREN TERRY
Costume Apprentice	ELIZABETH JOHNSON
Deck Crew	JOSH BENNETT, GARNER HARSH, EMILY JOSLIN, JUSTICE ORRAND, KELLY SCHEUMAN, MARLEE SHELTON
TPAC TD	WRENCH STEINLAGE
TPAC Master Electrician	TAYLOR HULSEY-THOMAS
TPAC Audio Engineer	JEFF ENT
TPAC A2	SARA JOHNSON
Marketing	CECE DECORTE, AMOS GLASS

SPECIAL THANKS

TMProductions, ZFX, DAVID ARNOLD, DAN DIETRICH,
CHAD DRIVER, MARLEE SHELTON, TERRY WYATT

* *Appearing through an Agreement between this theatre, Nashville Repertory Theatre, and Actors' Equity Association, the Union of Professional Actors and Stage Managers in the United States.*

** *Represented by United Scenic Artists, Local USA 829 of the IATSE*

WHO'S WHO IN THE CAST



IVORY BODNAR (Belle, Ensemble)

Ivory is thrilled to be performing in her first production with Nashville Repertory Theatre! She's a born and raised Alaskan and graduate of University of Central Oklahoma with a Bachelor of Music in Vocal Performance and a two-time NATS (National Association of Teachers of Singing) Award winner. A versatile singer and actor, her most recent credits include: *What the World Needs Now*, a musical showcase of Burt Bacharach at WCPAC (Franklin, TN), vocalist at Hong Kong Disneyland, featured vocalist for The People's Orchestra of Nashville and Mrs. Donner in *Rudolph the Musical* at The Grand Ole Opry.



MATTHEW CARLTON (Ebenezer Scrooge)

When the Rep first produced *A Christmas Carol* (1990), I was cast as Scrooge's nephew Fred. That show cemented my love for the story and I've, happily, played a dozen or so characters in eleven different productions of this classic since then. Over the span of more than 40 years, I've been fortunate enough to appear in over 100 other AEA productions, originating characters in the premieres of *A House Divided*, *Francis of Guernica*, *Hunchback*, *Frankenstein*, *The Battle of Franklin*, and *The Doyle and Debbie Show*. Other favorite local roles are: Doolittle, *My Fair Lady* (Studio Tenn), *The Pilot*, *The Little Prince* (People's Branch), Peck, *How I Learned to Drive* (Actor's Bridge), Macduff, *Macbeth*, (Nashville Shakespeare Fest.), *Sweeney, Sweeney Todd*, (Nashville Rep). "Scrooge" is a bucket list part for me, and I am so grateful to share the cherished holiday tradition of Dickens' masterpiece again.



DAVID MATTHEW CLARK (Tiny Tim Cratchit, Ensemble)

David Matthew Clark is ten years old and is incredibly excited to be making his professional theatre debut in Nashville Repertory Theatre's *A Christmas Carol*. He got his start in youth theatre at the age of six. Most often, he can be seen onstage with CYT Nashville in his hometown Franklin, TN performing with his sister and friends. Some of his favorite shows so far have included *Lion King*, *Les Miserables*, and *Tarzan*. David would like to thank his family, teachers, and friends for all their support and God for all his good gifts.



EVAN FENNE (Ebenezer, Ensemble)

Evan is ecstatic to be making his debut with Nashville Repertory Theatre in a show he holds near and dear to his heart and during the Christmas season. Acting credits include: *Love's Labour's Lost* (Nashville Shakespeare Festival), *A Doll's House* (Belmont University), and *The Good Times Are Killing Me* (Belmont University). Originally coming to school in Nashville for music, Evan found his passion for theatre fairly recently, and he's thankful for every opportunity to help tell a story.



MAX FLEISCHHACKER (Nephew Fred, Ensemble)

Max is a former student of Middle Tennessee State University, having studied both Music and Theatre for five years. He appeared in many shows there as *Sweeney Todd* (*Sweeney Todd: The Demon Barber of Fleet Street*), *Captain Black Stache* (*Peter and the Starcatcher*), and *Ernst* (*Cabaret*) among others. He has also performed as a violinist in the MTSU Symphony Orchestra and played in several pit orchestras for shows such as *Iolanthe*, *The Merry Widow*, and *Trial by Jury*. He is very excited to now bring his talents to TPAC in his first professional production with the Nashville Repertory Theatre.



GALEN FOTT (Mr. Fezziwig, Ensemble)

Galen Fott was last seen at the Rep earlier this year in the Ingram New Works reading of *She Reached for Heaven*. Other recent Rep credits include *Father* in *Ragtime* and *Torvald* in *A Doll's House, Part 2*. Elsewhere, Galen has portrayed *Burl* in *Smoke on the Mountain* (Studio Tenn), *Leontes* in *The Winter's Tale* (Nashville Shakespeare Festival), *Monsieur Dauphin* in *The Jonah People* (Nashville Symphony), *Mr. Mister* in *The Cradle Will Rock* (Nashville Opera), and both *King Triton* and *Chef Louis* in *The Little Mermaid* (Nashville Children's Theatre). A Clarksville native, Galen lives in Nashville with his wife Laura.



As Nashville's most trusted source for social and lifestyle coverage, *Nfocus* takes readers inside more events than any other publication in town.



nFOCUS



SUBSCRIBE TO OUR WEEKLY NEWSLETTER HERE.

   @NfocusMagazine

WHO'S WHO IN THE CAST



BEN FRIESEN (Dick Wilkins, Ghost of Christmas Future, Ensemble)

Ben Friesen is thrilled to be returning to the stage with Nashville Rep in this exciting new adaptation of a beautiful story. You may have seen him last spring as Christopher Boone in *The Curious Incident of the Dog in the Night-time* with the Rep, Scarecrow in *The Wizard of Oz* at Nashville Children's Theatre, or Otto in Rabbit Room's *The Hiding Place*. Ben is extremely grateful to Eve and Micah-Shane for the opportunity, to his family for supporting his dream, and to Dr. John Sebestyen, Dr. Christopher Bailey, and the late, great Matt Mantell for their guidance throughout his journey. To God be the glory. Yo Ho!



CAROLINE HENRY (Alice Cratchit, Ensemble)

Caroline is looking forward to performing with Nashville Repertory Theatre in *A Christmas Carol*! Her recent credits include Children's Chorus in *La Boheme* with Nashville Opera, Mayzie La Bird in *Suessical Jr* with Dance Academy of Bellevue, Blues Fairy in *Pinocchio*, and Lion in *The Wizard of Oz*, both with Akiva School. Through The Royal Conservatory of Music, Caroline recently completed the Level 1 Voice exam scoring First Class Honours! She loves her contemporary, tap, and ballet classes and is enjoying life as a 6th grader! Caroline wants to thank Mom, Dad, Eric, and her voice teacher Liza Marie Johnston!



DENICE HICKS (Mrs. Fezziwig, Ensemble)

Denice is grateful to have been performing in Nashville for over 40 years, beginning at Opryland and the Barn Dinner Theater, and most recently for the Nashville Shakespeare Festival as the Queen (*Cymbeline*). A member of the original Nashville Rep Artistic Company, Denice performed some of her favorite roles here including Emma (*Some Sweet Day*), Ophelia (*Hamlet*), Viola (*Twelfth Night*), Stella (*A Streetcar Named Desire*), Ouiser (*Steel Magnolias*), and the Birdwoman (*Mary Poppins*). She also does on camera and voice over work, and coaching. Thanks to all who support live theatre and to the community who makes it!



ALEX HILLAKER (Henry Cratchit, Ensemble)

Alex is excited to return to the Nashville Rep stage for *A Christmas Carol* after appearing last year in *Elf, The Musical* as Ensemble/Michael U/S. A fourth grader at Andrew Jackson Elementary where he is a school ambassador and performs in the Eagle Honor Choir, Alex has also become a regular on middle TN stages. Most recently appearing as Richard Williams Bell in *Spirit: The Authentic Story of the Bell Witch* (Bell Witch Fall Festival) and in the title role in *Oliver!* (Springhouse Theatre Company), other performances include Jason in *Falsettos* and The Child/The Dragon in *Monstersongs* (Street Theatre Company); Theo in *Pippin* (TMRProductions); and Benji in *Priscilla, Queen of the Desert* (Circle Players). Alex would like to thank Micah-Shane for this opportunity, along with the multitude of artists he has worked with in recent years for sharing their kindness and expertise in fostering his love of theatre performance.



ABBY HOOPER (Alice Cratchit, Ensemble)

Abby is thrilled to be making her Nashville Repertory Theatre debut in *A Christmas Carol*. Her favorite roles have been Young Anna in *Frozen Jr*, Scuttle in *Little Mermaid*, and Scarecrow in *Wizard of Oz*. Other productions include *On Christmas Day in the Morning*, *Seussical*, and *Annie*. In addition to performing, Abby enjoys composing music and singing. She would like to thank Emily Vetter for introducing her to the arts, Renaissance Players for opening the door to performing, and Marilyn Fair for fostering her love of music and theatre.



EMILY HOOPER (Tiny Tim Cratchit, Ensemble)

Emily is excited to be making her debut with Nashville Repertory Theatre in *A Christmas Carol*. Previous productions include *Little Mermaid*, *Wizard of Oz*, *Seussical*, *Goin' Buggy*, and *Annie*. She enjoys performing, singing, and improving her skills on piano. In her free time, Emily loves to read, ride her bike, and spend time with family. She would like to thank Marilyn Fair, The Renaissance Players, and her family for their love and encouragement.

WHO'S WHO IN THE CAST



ETHAN H. JONES (Mr. Blakeley, Ensemble)

Ethan H. Jones is making his debut with Nashville Repertory Theatre. A prolific actor with over sixty stage appearances to date, his repertoire includes: *Hamlet* (Polonius), *The Piano Lesson* (Wining Boy), *Othello* (Othello), *Race* (Henry Brown), *Romeo and Juliet* (Friar Lawrence), *Bad Seed* (Leroy), *Henry V* (King of France), *Harvey* (Elwood Dowd), and many, many others. He has also appeared in many print ads, commercials, and independent films. He thanks God for the opportunities he has received to express his creative side, and his wife Jacqueline for her love and support.



DAVID LONG III (Peter Cratchit, Ensemble)

David Long III is thrilled to be making his Nash Rep debut in *A Christmas Carol*. He was born and raised in Memphis, TN before moving to Nashville for college. He is currently a senior at Lipscomb University. He most recently finished playing the role of Will Bloom in Lipscomb University's production of *Big Fish*. David has performed in several roles including Mr. Wickham in *Pride and Prejudice*, Sam in *Crazy For You*, and Prince in *Romeo and Juliet*. He would like to thank his family, friends, and educators for their everlasting support over the years.



DEB MEEKS (Mrs. Kimball, Mrs. Dilbur, Ensemble)

Deb Meeks is absolutely thrilled to be making her Nashville Repertory Theatre debut in this adaptation of *A Christmas Carol!* Though she is relatively new to the Nashville area, she has been sharing her love of theatre in a variety of capacities for over 40 years. Middle Tennessee credits: Dowager Empress (*Anastasia*), Nurse (*Romeo & Juliet*), Aunt March / Mrs. Kirk (*Little Women*), Drowsy (*The Drowsy Chaperone*), Miss Skillon (*See How They Run*). Other favorites include her award-winning roles as Yente (*Fiddler on the Roof*), Helen Ffolliot-Ffolkes (*Murder on the Nile*) and Lady Lucy Angkatell (*The Hollow*). "Thankful and Blessed....and as always, it is a joy!"



ERIC D. PASTO-CROSBY (Bob Cratchit, Ensemble)

Eric D. Pasto-Crosby is a native of Nashville. He graduated from University of Colorado at Boulder with a B.F.A. in performance studies. Recent shows: *Twinkle Twinkle and Mockingbird* for Nashville Children's Theatre, *The Curious Incident of the Dog in the Night-Time*, *Streetcar Named Desire* and *Sense & Sensibility* for Nashville Rep, and *The Glass Menagerie* for Studio Tenn. He has worked with: Nashville Opera, Nashville Shakespeare Festival, Nashville Children's Theatre, Colorado Shakespeare Festival, Stage One, Tennessee Shakespeare Festival, and People's Branch Theatre. A loyal member of the Society of American Fight Directors and a proud member of Actor's Equity Association.



BRIAN CHARLES ROONEY (Ghost of Christmas Present, Ensemble)

Recently Buddy the Elf in *Elf, the Musical* for Nashville Rep.; Broadway: Lucy Brown in *The Threepenny Opera* (Roundabout Theatre Co. - Lys Symonette Award for Dramatic Excellence); *I Am Harvey Milk*, with Kristin Chenoweth (Lincoln Center); *Guys & Dolls, in Concert*, with Nathan Lane & Megan Mullally (Carnegie Hall); Dionne Salon in *Bedbugs!!!* (Off-Broadway, NY Times Critics Pick); Candy Darling in *Pop!* (Yale Rep; Best Actor - CT Critics Circle Award); Lee/Blanche in *Miss Blanche Tells It All* (NYMF Outstanding Lead Actor Award); *The Music of Andrew Lloyd Webber* (North American Tour). Upcoming: The Emcee in *Cabaret* (Studio Tenn). www.briancharlesrooney.com



KRIS SIDBERRY (Ghost of Christmas Past, Ensemble)

Kris is ecstatic to make her Nashville Rep debut! Huntington Theater's *Hurricane Diane*. Le Petite Theater's *High Priestess of Dark Alley*. Lyric Stage Company: *The Cake, Intimate Apparel, By the Way, Meet Vera Stark*. Speakeasy Stage: *School Girls; or, The African Mean Girls Play, Significant Other Play*. Company One: *The Good Negro, Grimm, All American Girls* (off-Broadway, National African American Theater Festival). Company Member of STEPs Drama a Diversity and Inclusion Consulting Firm. Founding member of the all-female experimental movement company LAS in NYC. Various film, TV, voiceover, and commercial projects, including Sony Pictures' *I Wanna Dance with Somebody*, HBO's new series *Julia*, Kathryn Bigelow's *Detroit*, Lifetime's *Web Of Lies*. IG:krissidberries

WHO'S WHO IN THE CAST



SHELBY TALBERT (Martha Cratchit, Ensemble)

Shelby Talbert is a Nashville based actor and is super excited to be making her Nashville Rep debut! She graduated from Lipscomb with her Acting BFA in 2022. Her favorite/recent credits include Anne in *Anne Frank* (Nashville Children's Theatre), Juliet in *Romeo & Juliet*, and Ruth in the world premiere of *But How Fantastic* at The Barbershop. She would like to thank her family, friends, and the Rep for this opportunity.



CHRISTINE TOOLE (Sarah, Ms. Kendall, Ensemble)

Christine is thrilled to be a part of this brand-new rendition of *A Christmas Carol*. Recent credits include; Mary Poppins in *Mary Poppins* (Nashville Rep), *The Sound Of Music* (Studio Tenn), Charlotte Dennon in *Elf The Musical* (Nashville Rep), Daphne in *Scooby Doo Live!* (International tour), and her solo cabaret show at don't tell mama in NYC. In addition to performing, Christine also teaches voice out of her own studio as well as with Lipscomb Academy. Christine earned her BFA in Musical Theatre from Shenandoah University. Big love to her husband, and family for their unending support. @christinedianet @thevocalistworkshop



BRIAN WEBB RUSSELL (Jacob Marley, Ensemble)

Brian returns to Nashville Rep in the show he last appeared in pre-Covid, *A Christmas Carol*. No stranger to Rep audiences, Brian has been seen in *Glengarry Glen Ross*, *Superior Donuts*, *God's Man in Texas*, *Inherit the Wind*, *The Crucible*, *West Side Story*, and *Othello*. He recently completed a run of *Much Ado about Nothing* for Nashville Shakespeare, *Two Gentlemen* for Conasauga Shakespeare and will be seen in the upcoming *Magic Flute* for the Nashville Opera.



ELLE WESLEY (Fan, Belinda Cratchit, Ensemble)

Elle Wesley is thrilled to return to Nashville Rep in *A Christmas Carol* after her debut last season in *Elf the Musical*. Elle is no stranger to the professional stage with credits including the role of "Agnes Smith" in *Meet Me in St. Louis* as well as a Munchkin in *The Wiz* at MUNY Theatre; "Ngana" in *South Pacific* at the Stages Theatre in St. Louis; the title role of Annie in Chaffin's Dinner Theatre's production of *Annie*. Elle also appeared as beloved camper, Phoebe, in the family movie *Camp Hideout*. Elle would like to thank everyone for this incredible opportunity, her family, friends, church, and her theatre family for all their love and support as she lives her dreams! IG:@ellewesleyofficial



JENNIFER WHITCOMB-OLIVA (Elizabeth Cratchit, Ensemble)

Jennifer is an interdisciplinary artist from Nashville, Tennessee. She received her BA in Theatre Performance and Dance from Austin Peay State University. Regional Credits include: Land Lady/Lula Buffington, *Violet* (Nashville Reparatory); Sister Berthe, *The Sound of Music*, (Studio Tenn); Helen Ludlow, *The Welkin*, (Nashville Story Garden); Lion, *The Wizard Of Oz*, (Nashville Children's Theatre); Film credits (or Other credits) include: Frankie J. Pierce, *One Vote Won*, *Doctor*, *The Favorite Son* (Nashville Opera); Ma/Mayor/Nun, *The Toxic Avenger* (Street Theatre Company); Tasha, *MOTHERHOOD:THE MUSICAL* (Faby Baby Productions). She would like to thank her friends, family, and fur babies for all their love and support.



MATTRESSES | OFFICE CHAIRS | SIT TO STAND DESKS | ZERO GRAVITY RECLINERS | MASSAGE CHAIRS | PILLOWS | INVERSION TABLES
FITNESS & THERAPY

 RELAX THE BACK®
livewellness®

NASHVILLE
2020 Glen Echo Rd.
615.460.0004

*Offer valid for new customers only.



Skye Lounge
at Sheraton Grand Welcomes You

360° ROOFTOP VIEWS **DRINK SPECIALS**

Learn more about our menu & drink and sushi specials below.
Come see us after the show! Wed - Sat | 6pm - 1am



*reservations encouraged

PRODUCTION STAFF

MICAH-SHANE BREWER (Director/Author)

Micah-Shane has enjoyed a 20-year career as a theatre maker and has directed and produced over 100 plays and musicals. A director, actor, musician and educator, Micah-Shane earned bachelor's degrees in music and theatre from the University of North Carolina in Greensboro. He co-founded Encore Theatrical Company where he served as Artistic Director for eight seasons. He later received his M.F.A. in acting at the University of Tennessee Knoxville and worked as an actor at the Clarence Brown Theatre for over three seasons. Some of his favorite acting credits include *Sunday in the Park with George* (George), *Sweeney Todd* (Tobias), *The Full Monty* (Malcolm), *Our Town* (Stage Manager), *Spamalot* (Sir Robin), *Violet* (Preacher), and more. As a director, notable productions include *Follies*, *The City of Conversation*, *Cabaret*, *Les Miserables*, *Death of a Salesman*, *Chicago*, *Inherit the Wind*, *One Man, Two Guvnors*, *Assassins*, *The Laramie Project* and more. Micah-Shane has also served as a Professor at the University of Mississippi and the University of Tennessee. Since joining the Rep in 2021, he has directed the Rep productions of *The Curious Incident of the Dog in the Night-time*, *Elf*, *Rent*, *Mary Poppins* and *Ragtime*. Thank you for supporting live theatre in Nashville!

GREGG PERRY (Music Director/Composer)

Gregg Perry has orchestrated and arranged national commercials, spent 7 years as Dolly Parton's musical director and produced music for the films *9 TO 5*, *Best Little Whorehouse In Texas*, and *Sweet Dreams*. He also graduated from Vanderbilt School of Medicine and practiced in East Tennessee for many years. Despite his medical practice he has continued to work with college, regional and community theatre productions. He is thrilled to be part of this team.

SHABAZ UJIMA (Choreographer)

Native to Nashville, Shabaz began his formal dance training at the Nashville School of the Arts and the School of Nashville Ballet. For college he attended the New World School of the Arts in Miami, FL and began his training in the Martha Graham Technique. Shabaz's professional career spans over a decade. During that time, he danced with NB2 (Nashville Ballet 2nd company), Dayton Contemporary Dance Company, Dayton, OH, Cleo Parker Robinson Dance Ensemble, Denver, CO, Jeanne Ruddy Dance, Philadelphia, PA, Graham II (Martha Graham Dance Company's 2nd company), New York, NY. While dancing he worked with many notable choreographers like Donald McKayle, Ronald K. Brown, and Paul Vasterling. He has performed the works of Alvin Ailey, Martha Graham, Jose Limon, and Anna Sokolow. Later in his career, Shabaz began to teach company class for the Dayton Contemporary Dance Company. Currently he is on the of the full-time faculty at the Nashville Ballet and adjunct in the dance department at the Belmont University. As a choreographer, Shabaz have created and collaborated with the artists of the Nashville Ballet, Nashville Opera, Nashville School of the Arts, and VSA Tennessee (The State Organization on Arts and Disability). Some of his musical theater choreographic credits include *Hairspray*, *In the Heights*, *Once on this Island*, and *The Wiz*. In 2017, ShabazI founded shackled feet DANCE, which is Nashville's Black Dance company.

GARY C. HOFF (Scenic Designer)

Mr. Hoff has proudly worked for Nashville Repertory Theatre for over twenty-three years. The positive support for the design work and technical work over the last twenty-three years has been overwhelming. I would like to thank all those that make our productions come to life, not only our talented staff at The Rep, but all those businesses and individuals that have it all possible. Gary holds a MFA in Scenic Design from Purdue University and a BFA in Technical Theatre from Central Michigan University. Gary hopes you enjoy this very exciting season and support the arts whenever possible. "Thank you!"

MELISSA DURMON (Costume Designer)

Melissa is honored to be the Resident Costume Designer, Costume Shop Manager, and Rentals Manager at the Rep. She has thoroughly enjoyed designing this production of *A Christmas Carol*. Melissa's career in film theatre and television spans well over 200 productions ranging from Charleston's Spoleto Festival to the Hollywood Bowl. You may have seen her most recent work in Street Theatre's critically acclaimed *Ride the Cyclone* or over the past two seasons with Belmont Musical Theatre productions. Melissa holds an MFA in Theatrical Costume, Wig, and Makeup Design from CSUF and a BS in Speech & Theatre from MTSU. She loves the creative process, staying busy, participating in mission work, and traveling. She'd like to thank her wonderful parents Kathy & Dwight for their unwavering belief in her, her beautiful children Natalie & Lucas for being her reason to create, and her amazing husband Dan for his unending patience, constant encouragement, and willing assistance.

PRODUCTION STAFF

MICHAEL BARNETT (Lighting Designer)

Michael Barnett is delighted to have this opportunity to rejoin Nashville Repertory Theatre for his seventeenth season! He has designed a number of shows with Nashville Repertory Theatre including *Rent*, *Bloody Bloody Andrew Jackson*, *Sweeney Todd* (2014, 2008), *A Doll's House Part 2*, *Noises Off*, *The Whipping Man*, *Red*, *Cabaret*, *Big River*, *Superior Donuts*, *Dr. Jekyll & Mr. Hyde*, *The 39 Steps*, *Yankee Tavern*, *Steel Magnolias*, *The Underpants*, *Santalaland Diaries*, and *A Christmas Story* among others. Regional: *Million Dollar Quartet*, *Aida*, *The Sound of Music* (Studio Tenn); *Forever Plaid*, *Miracle on 34th Street* (National Tour); *Grease*, *The Sound of Music* (North Shore Music Theatre); *Saturday Night Fever* (Maine State Music Theatre); *Our Town*, *Titus Andronicus* (Faction of Fools); *The Who & The What* (Gulfshore Playhouse); *Always...Patsy Cline* (Arkansas Repertory Theatre); *The Wizard of Oz*, *Tarzan*, *Beauty & the Beast*, *Always...Patsy Cline*, *Kiss Me Kate*, *Dial "M" for Murder*, *October Before I Was Born*, *Saving Old Smokey*, *Forever Plaid* (Barter Theatre); *Becoming Dr. Ruth* (Florida Repertory Theatre); *To Kill a Mockingbird* (New Stage Theatre); *My Fair Lady* (Cumberland County Playhouse). Michael lives in Oxford, MS with his wife and children where he is the Chair of the Departments of Theatre & Film and Art & Art History at The University of Mississippi. He is a proud member of United Scenic Artists Local #829.

MARK S. ZUCKERMAN (Sound Designer)

Mark is excited to return to Nashville Rep for *A Christmas Carol*. Mark was the resident sound designer and engineer for Westchester Broadway Theatre in Elmsford New York for over 10 years and worked extensively throughout the New York tri-state area. Favorite credits include *Aida*, *Million Dollar Quartet* (Studio Tenn) *Elf*, *9 to 5* (Nashville Rep) *Phantom*, *Jekyll and Hyde*, *Always... Patsy Cline* (Westchester Broadway). More at MarkSZuckerman.com, MZTheatrical.com

DJ PIKE (Projection Designer)

DJ is currently a professor at the University of Northern Colorado, where he is developing a new design concentration in Projection design and Technology. Recent scenic and projection designs include *Design Murder on the Orient Express*, *She Kills Monsters*, and *Hair*. His projection designs include *Something Rotten*, *Beautiful*. *The Carol King Musical*, *A Christmas Carol*, *Hansel und Gretel* (Opera), and *The Magic Flute* (Opera). More of his work can be found at djpike.com.

RANDY LAWSON (Stage Manager)

Is thrilled to back home with friends at Nashville Rep, after PSMing last season's smash, *Elf the Musical*. Broadway: *The Phantom of the Opera* (Sub Stage Manager) *Sugar Babies* (Broadway Revival workshop) *De La Guarda* (Off Broadway-2 yrs) *Million Dollar Quartet* (National Tour). Regional: *A Christmas Carol* (Alabama Shakespeare Festival, & Actor's Theater of Louisville) *A Chorus Line* (Ogunquit Playhouse & Pennsylvania Shakespeare Festival) *Into The Woods* (Fulton Opera House) *A Gentleman's Guide To Love And Murder*, *The Sound Of Music* and *Mamma Mia!* (CSTC). *Miss Saigon* (VMT) *The 39 Steps* (Ivoryton Playhouse) *Fun Home* (River & Rail) *Cato* (Clarence Brown Theater) *Gypsy & 1776* (Maine State Music Theater) *Smokey Joe's Cafe* (Casa Mañana) *Jesus Christ Superstar* (Tennessee Rep / Founding Member) *Aida* (Tuacahn) *Catch Me If You Can* (Tent Theater) *Singin' In The Rain*, *Cabaret & 42nd Street* (Atlantic City/Miami) Circle Rep, Lincoln Center Theater, Williamstown Theater Festival, Goodspeed Opera House, New York Theater Workshop, The Magic Theater (San Francisco) & The Grand Ole Opry House. Also: Script Supervisor for The live TV productions of The Drama Desk Awards, & Street Coordinator for The Macy's Thanksgiving Day Parade (6yrs). Randy worked with Director Harold Prince on *Flight of the Lawn Chair Man & 3hree*. As an actor, Randy created the role of the "kiss of death" waiter in John Guare's *New York Actor*, directed by Jerry Zaks.

KATIE CUNNINGHAM (Dialect and Voice Coach)

Katie Cunningham is an Assistant Professor of Theatre and Head of Acting at the University of Tennessee, Knoxville. Recent and upcoming voice, text, and dialect coaching includes PlayMakers Rep; Great River Shakespeare Festival; Southwest Shakespeare Company; and multiple productions at Clarence Brown Theatre as the Resident Voice and Text Director. Katie is a Certified Teacher of Knight-Thompson Speechwork and a PAVA Recognized Vocologist. MFA Acting, FSU/Asolo Conservatory for Actor Training; BA, UNC Chapel Hill. She is a proud member of Actors' Equity Association since 2010, SAG-AFTRA, VASTA, and PAVA. www.katiecunningham.com

PRODUCTION STAFF

ISAAC KRISPIN (Production Manager)

Isaac is a graduate of the University of Tennessee and a Nashville native. He is overjoyed to be working for his hometown theatre. Previous SM credits include Nashville Opera, Nashville Ballet, Nashville Children's Theatre, Opera San Antonio, Florentine Opera Company, Barter Theatre, Illinois Shakespeare Festival, Arkansas Repertory Theatre, and Clarence Brown Theatre. He would like to shout his family and his beautiful wife, Isabel!

CHELSEA FLOWERS (Technical Director)

Chelsea Flowers is an alumna of Lipscomb University Theatre where she received her BFA in Design and Production. She has worked at many regional theatres across the U.S. as a technical director, carpenter, stage hand, and stage manager. Prior to joining The Rep she was Technical Director for the Lipscomb University Theatre Department. Chelsea is eternally grateful for the love and support from her beautiful wife! Love you Ev!

LAUREN YAWN (Props Manager)

Lauren is thrilled to be kicking off Nashville Rep's season with *A Christmas Carol*! She has worked as a Props Artisan for several years and is so glad to be joining her Rep family for another season. Lauren has worked in both theatre and film for companies across Nashville and has spent several summers working with Santa Cruz Shakespeare. She would like to give her love and thanks to her friends and family for their never-ending support.

YOLANDA TREECE (Assistant Director)

Yolanda Treece is thankful to be a part of Nashville Repertory Theatre. She recently completed her Nashville stage debut as Grandma in Cynthia C. Harris' world premiere play, *The Calling is in the Body* with Actors Bridge Ensemble. Some of her favorite shows include: *In the Heights* (Abuela Claudia) Vision Latino Theatre Co., Chicago; *Sister Act* (Deloris) Encore Theatrical Co. Morristown, TN; *Violet* (Almeeta/Lula Buffington) Clarence Brown Theatre, Knoxville, TN; *Jesus Christ Superstar* (Mary Magdalene/Anna U/S) Theatre Guild. Morristown; *Into the Woods* (The Witch/Baker's Wife) WSCC/Theatre Guild, Morristown; *Love, Loss and What I Wore*, Encore Theatrical Co./Flying Anvil Theatre, Knoxville. She would like to express her sincere gratitude to all her family and friends who have encouraged, supported, and loved her along her journey. To Treven, Dajah, Authenia, a special thank you for being her forever cheerleaders! Praises to GOD for filling her with the love of music, theatre and story-telling!

EVE PETTY (Assistant Stage Manager)

Eve Petty is excited to be once again working behind the scenes with Nashville Repertory Theatre. She recently was the Assistant Stage Manager for *Curious Incident of the Dog in the Nighttime* and loves to be involved in theatrical magic-making. Eve Petty is a Nashville-based multi-hyphenate theatre artist. She currently works with Nashville Children's Theatre as a Teaching Artist and with other local theatre companies in various capacities, such as fight choreographer, actor, director, and stage manager. Eve loves performing just as much as she loves working behind the scenes and contributing to the creative process of local productions. @evelynjanepetty

HANNAH BONER (Assistant Stage Manager)

Hannah is a freelance stage manager/assistant stage manager in the Nashville area and is excited to join the Rep for *A Christmas Carol*. She received her B.F.A. in Theatre Design and Production from Lipscomb University in 2021. Previous local credits include: *The Diary of Anne Frank*, *The Wizard of Oz*, *Llama Llama Red Pajama* (Nashville Children's Theatre); *Così fan tutte*, *The Magic Flute* (Vanderbilt Opera Theatre); *Love Letters* (Studio Tenn); *Favorite Son* (Nashville Opera).

PRODUCTION STAFF

ERYNN BARRETT (Dramaturg)

Erynn Barrett is a Nashville-based actor, historian, and dramaturg. She is a student of History and Theatre at Lipscomb University, where she has done dramaturgical work on *An Enemy of the People*, *Pride and Prejudice*, and *Big Fish*. Most recently, she worked as dramaturg and director's assistant on Nashville Shakespeare Festival's production of *Much Ado About Nothing*. Erynn would like to thank her professors and mentors, her mother, and, of course, Nashville Rep for this opportunity!

GRACE WEAVER (Child Supervisor)

Grace Weaver is originally from Decatur, IL and received her BFA in Theater for Youth from Samford University. As a teaching artist, Grace has worked across the southeast with Birmingham Children's Theatre, The Alliance, The Rose, and Nashville Children's Theater. She also has a passion for storytelling and some of her favorite credits include *Peter and the Starcatcher* (Ted), *The Mysterious Case Files Of Silver Cash* (Silver Cash), *Apollo: To The Moon* (Director), and *The Giver* (Director). Grace is delighted to support the talented young people in the cast. She wishes you happy holidays and hopes you enjoy the show!

DREW OGLE (Executive Director)

Drew Ogle joined Nashville Repertory Theatre in 2018 as Managing Director and assumed the role of Executive Director in 2019. He has been a leader in the nonprofit arts industry for almost 20 years, with prior executive positions at Florida Repertory Theatre, the Rose Center Council for the Arts, and Encore Theatrical Company. During his tenure at Nashville Rep, the company has been named the Best Local Theatre by the Nashville Scene and the #1 Nonprofit Arts Organization in Nashville by the Nashville Business Journal. He has produced and/or directed almost 100 plays and musicals.



NASHBILL
NASHVILLE'S PLAYBILL

GET YOUR AD
IN THE
Spotlight

When you place your ad in a NashBill playbill, you connect with arts patrons and theatre lovers while supporting the local arts community. Playbills provide an opportunity to engage with a discerning, educated, active consumer who cares about the arts and cares deeply about their community.

To advertise or learn more
please contact Mike Smith at
msmith@fwpublishing.com.

STAFF AND BOARD OF DIRECTORS

STAFF

Executive Director.....	DREW OGLE	Head of Design/Resident Scenic Designer	GARY C. HOFF
Artistic Director	MICAH-SHANE BREWER	Resident Costume Designer	MELISSA DURMON
Director of Marketing and Communications...	AMOS GLASS	Production Manager	ISAAC KRISPIN
Director of Development	LAURA AMOND	Technical Director	CHELSEA FLOWERS
Office Manager	TERESA DRIVER	Costume Assistant.....	DENESE RENE EVANS
Executive Assistant.....	MIKE SALLEE, JR.	Wardrobe Manager	KAITLIN STEER
Development Associate	MARY CATHERINE HUGHES	Lead Carpenter	JOSHUA MAST
Marketing/Communications Assistant	CECE DECORTE	Carpenter	ELIZABETH BURROW
Artistic Associate.....	YOLANDA TREECE	Props Manager	LAUREN YAWN

2023/2024 BOARD OF DIRECTORS

OFFICERS

MARK PEACOCK
President

ELENA REINERT
Treasurer

LORRIE BROUSE
Past President

SEJAL MEHTA
Vice President

TIFFANY VILLAGER
Secretary

MARTHA RIVERS INGRAM
Co-Founder

DIRECTORS

PHYLLIS D. ADAMS
LENAI AUGUSTINE
CALEB BARRON
SAMANTHA BRESKE MAGEE
SHEILA D. J. CALLOWAY
PAMELA L. CARTER
EDMUNDO CEPEDA
PATRICK R. DAILEY

CONNIE RICHARDSON DEIDIKER
CINDY ENDERLE
HOLLI HARRISON
JENNIFER JOHNSON
LAURA KIMBRELL
JOHN E. LANSCH
JOHN MANSON
ELISHEBA MROZIK

SHANIQUE MCCALLISTER NIXON
CAROL PENTERMAN
SUSAN RICHARDSON
ISABEL C. RIVERA
REBECCA ROULAND
TRACEY HUGHES ROYAL
EMILY S. WEISS
JEFF ZEITLIN

ADVISORY COUNCIL

ED BENSON
LEE F. BLANK
ERIN BISHOP
LESLIE BOONE
BARBARA BOVENDER
SHARON LAGRANDE CARTER
CHRIS CHAMBERLAIN
CAROL CRESWELL-BETSCH
BETH CURLEY
BONNIE DOW
ANNETTE ESKIND
TRINA EWALD
SARA GETSAY
KIM HEWELL
SARA HOOVER
VICKI HORNE
DAVID JACKSON

A. SCOTT KENDRICK
HOWARD LAMAR III
TIM LARSON
JOHN LASITER
KEN LEISER
SALLY LEVINE
ANGELA MARTIN
CHERYL WHITE MASON
ANNE ELIZABETH MCINTOSH
CRAIG E. PHILLIP
JOELLE PHILLIPS
TIM PIERCE
MATT PIERUCKI
MARY NEIL PRICE
JAN READ
JIM REAMS
JOHN ROBERTS

JULIE ROBERTS
TODD ROLAPP
CHARLIE SANGER
JULIE SCHNEIDER
ANN MEADOR SHAYNE
ANN STERN
DEBORAH M. TANNENBAUM
T. STEPHEN C. TAYLOR
BRANDE THOMAS
LOLITA TONEY
MARTHA TRAMMELL
LATONYA TURNER RILEY
NICKY WEAVER CHEEK
DEBORAH K. WILLIAMS
ALAN YOUNG
ALAN YUSPEH
BARB ZIPPERIAN

FEATURED GALLERY



THE SUN INSIDE THE EVENING

BY

HUGER FOOTE

14 NOV - 23 DEC

david lusk gallery

GALLERY HOURS TUE - SAT 10-5

GALLERISTS WHO WISH TO BE IN THE FEATURED GALLERY CONTACT MIKE SMITH AT MSMITH@FWPUBLISHING.COM FOR INFORMATION AND PRICING.

CORPORATE, FOUNDATION, AND GOVERNMENT PARTNERS

Nashville Rep is extremely grateful for the support of the following corporations, foundations, and government agencies that support its mission and programming through their contributions.



This project is supported, in whole or in part, by federal award number SLFRP5534 awarded to the State of Tennessee by the U.S. Department of the Treasury.

REP YOUR CITY REP YOUR CITY REP YOUR CITY



Shop The Scene!



REP YOUR CITY REP YOUR CITY REP YOUR CITY

DONORS

THANK YOU FOR SUPPORTING THE REP!

Nashville Rep is deeply grateful to the following individuals, businesses, government agencies, and foundations for supporting the arts in Nashville through their generous contributions to our Annual Fund and Special Events.

For further information about donating to Nashville Rep, please contact Laura Amond, Director of Development, at laura@nashvillerep.org or 615-349-3213.

SUPPORTERS FROM JULY 1, 2022 – NOVEMBER 1, 2023

\$50,000 +

Anonymous
Ingram Charities
Marlene and Spencer Hays Foundation
Martha Rivers Ingram Advised Fund
Metro Nashville Arts Commission
Shubert Foundation
Tennessee Arts Commission

\$35,000 - \$49,999

HCA Healthcare Foundation
Middle Tennessee Repertory Theatre Support Fund
Dr. Nancy Peacock and Dr. Mark Peacock

\$25,000 - \$34,999

Anonymous
HCA Healthcare/TriStar Health

\$15,000 - \$24,999

Amazon
Ms. Lorrie Brouse and Mr. Richard Piazza
Cindy and Mark Enderle
James Stephen Turner Family Foundation
Mr. Jay Jones, Jr. and Mr. Robert J. Turner
Kimpton Aertson Hotel
Mr. Timothy M. Larson
National Endowment for the Arts
Nashville Law Offices

\$10,000 - \$14,999

Pamela and Michael Carter
Connie and Nick Deidiker
Memorial Foundation
Rebecca and Chris Rouland
Pamela and Steven Taylor
Sheraton Grand Nashville Downtown
Truist Foundation
Washington Foundation

\$5,000 - \$9,999

AT&T
Mr. Jason T. Bradshaw and Mr. Robert J. Deal
Caterpillar Financial Services Corporation
The Community Foundation of Middle Tennessee
Cornea Consultants of Nashville

Allen DeCuyper and Steve Sirls
The Steven and Laurie Eskind Family Foundation
Ken Fitzpatrick
Ronald Gobbell and Janet Kurtz
Vicki and Rick Horne
Mrs. Emily Humphreys
Marilyn and Calvin LeHew
Melanie McBurney
Aaron Mrozik and Elisheba Israel Mrozik
Mr. Rodney L. Pewitt
Pinnacle Financial Partners
Publix Super Market Charities Inc.
Elena Reinert
Susan Richardson
Robert K. and Anne H. Zelle Fund for Fine and Performing Arts
Jennifer Robinson
Dr. Norman Scarborough and Ms. Kimberly Hewell
Michelle and James Schmitz
Patricia and Louis Todd Family Foundation
Mrs. Martha J. Trammell
Christine Tudor
Tiffany Villager
Tracy and William Wade
Bradley Wensel and Jonathan Savage
Jeff Zeitlin

\$2,500 - \$4,999

Alliance Bernstein
Dominique Arrieta
Sophia Yvette Babb
Krissa and Marc Barclay
Jeanette Barker and Dax Langford
June Barker
Jamie and Ed Benson
Bradley Arant Boulton Cummings LLP
The Honorable Phil Bredesen and Ms. Andrea Conte
Buckingham Foundation
John Burrell
Kerri and Lucas Burton
Kisha and Dale Campbell
Sabrina Q. Dewey
Melissa Durmon
Enterprise Solutions
Jacob Estes
Dr. and Mrs. Mark D. Ewald
First Horizon Foundation
FirstBank
Debbie and Carlos Garcia

Allison Reed and Sam Garza
Sara and Rick Getsay
Tamara Hart
Zane Henry
Dr. and Mrs. Elliot Himmelfarb
Gretchen and Patrick Howell
Allison Johnson
Jennifer Johnson
Mr. Neil B. Krugman and Ms. Lee Pratt
Dr. Casey Chollet-Lipscomb and Mr. Ryan Lipscomb
Donna J. McNeal
Dr. Sejal Mehta and Dr. Devin Sherman
Faye and Tony Meluch
Janice and David Morgan
Nashville Convention and Visitors Corporation
Janet and Kerry Nations
John Nefflen
Anna Page
Piedmont Natural Gas
Piedmont Natural Gas Foundation
Peggy and James Richardson
Plastic Surgery Center of Nashville
Ms. Isabel Rivera
Charmane and Rick Rohr
Mrs. Anne Roos
Sandra Schatten Foundation
Teresa and Steve Sebastian
Sara Skrmetti
Claudia and John Turner
Vanderbilt University
Bill Wade
Elizabeth Waller
Carol and Darryl Yochem

\$1,000 - \$2,499

Anonymous (2)
Rachel and James Ailor, Jr.
Amy and Brannan Atkinson
Ms. Lenai C. Augustine
Geoff Barker and Kathy Giroux
Alexandra and Caleb Barron
Russell W. Bates and Ben Scott
Belinda Berry and Thomas Barrett
Erin L. Bishop
Angela and Jerry Bostelman
Spencer Bowers
Doug Bowmann
Samantha Breske Magee and Lucas Magee
April Britt

DONORS

Charles F. Callihan
Judge Sheila Calloway
Tricia and Chris Casa Santa
Jason Catron
Mary and Joe Cavarra
Anahi and Edmundo Cepeda
Eric Cook and Jason Somerville
Katie and Kevin Crumbo
Patrick R. Dailey
Ann and Kirby Davis, Jr.
Todd Dean
Sherry Stewart Deutschmann and
Mark Deutschmann
Bonnie J. Dow and John M. Sloop
Elizabeth and Bill Easterly
Jack Erter and Noelle Daugherty
Mrs. Annette S. Eskind
The Jeffrey and Donna Eskind Family
Foundation
Angela Evans
Julia and Carl Falk
Revi Ferrer and Thomas L. Black
Judy and Frank Foster, Jr.
Dixie Frederiksen
Jennifer and Charles Gay
Kevin Gerety
Catherine and Frederick Grace
Vickie Hannig
John Hoomes and Carol Penterman
Dr. and Mrs. Stephen Houff
Mrs. Martha Rivers Ingram
Henry Johs and Marjean Coddon
Tom Kaczmarek
Laura and TK Kimbrell
Marie and David Kurtz

Amy R. LaGrant
Kyle Langford
John E. Lansche
Kenrick T. Larson
John T. Lewis
Midori A. Lockett
Minuteman Press
Corrie and Jeremy Maxwell
Lynne and Tony McAlister
Dr. Catherine Stober and Mr. Jim
McAteer
Anne Elizabeth McIntosh and Andrew
Sutphin
Kathryn McNabb
Donald and Tyler Moody
Mountain Mall of Gatlinburg
Jennifer Carlat and Jonathan Norris
Marian Ott and Craig Philip
OZ Arts Nashville
Deborah and Cabot Pyle
Arbadellia and Scott Richardson
Tracey Hughes Royal
Douglas M. Russo
Sharon and Todd Sandahl
Sandra and Robert Sarratt
Laurie and James Seabury III
Dr. and Mrs. Gregg C. Shepard
Dr. Kara Smith
Sandra and William Spitz
Ross Stone
Carolyn and Stephen Taylor
Tennessee Orthopaedic Alliance
Leila M. Tsaroumis
Two Rivers Ford Inc.
Jan and Alan Valentine

Beth E. Vessel
Troy Villager
Mrs. Nancy J. Weaver
Stacy Widelitz
Dallas and Samuel Fleming Wilt

\$500 - \$999

Anonymous (2)
Theresa and Kevin Alexandroni
Laura and Mike Baggett
Karen and Peter Bird
Danielle Breezy
Chris Buchanan
Jayson H. Campbell
Lee Carroll and Scott Hiatt
Dr. Elizabeth Cato
Cigna
Kayla and Donald Counts III
Nikki Downes
Chris Downs
Mariwyn Evans
Leigh Ferguson
Laura and Galen Fott
Evelyn and Gabe Galletti
Jill Gravatte
Daniel Groover
Pam Hamrick
Tiffany Hardin
Clay A. Hillwig
Rife Hughey
Emily Johnson
Bonnie and Bart Johnston
Amanda Kane
Scott Kendrick and Lynn Lassiter
Kendrick



DONORS

Sally M. Levine
Pamela Lewis
Bobbi Lipschutz
Christian Lyhus
Raikes Anne McCrary
Keri V. McInnis
Jessica Miller
Suzanne B. Moore
Patricia and James Munro
Matthew Newbill
Murat Ozgener
Jana Lisle Parham
Wendy and Jason Pharris
Drew Philpott
Katherine Richardson
Nathan H. Ridley
LaTonya Turner Riley
Rachel Robinson and Steve Mitchell
Jenny M. Rogers
Anne and Joseph Russell
Maureen and Charles Sanger
Ann and Jonathan Shayne
Connie and Greg Shriner
Greg Smith and Jan Read
J. T. Smith
Michael Smitherman
Brenda and Joseph Steakley
Ann and William Stern
Brice Toole and Christine McNeal
Yolanda Treece
Jennifer Trsinar
Brooke and Joshua Trusley
Jacob Tudor
Jennifer C. Turner
Allison Valiquette
Mike Weber
Emily Weiss
Elaine and Carman Wenkoff
Brooke and Derek West
Roy Zent and Ambra Pozzi

\$250 - \$499

Anonymous (3)
Kay and Chip Arnold III
Jimmie Baugh
Margaret Blank-Cook
Toni Brannick
Jen and Aaron Broad
Janet K. Bruno
Kim Burns
Dr. Donna Carr
Pamela and Mark Carver
Lindsay Cavarra
Barbara Chazen
Chase Cole
Mr. Randy Craft
Ms. Gail Greil
Rachel Darter
Dr. Maria Gabriella Giro and Dr.
Jeffrey M. Davison
Judith Deidiker
Drs. Carol and Richard Detmer
Diana and John Doss
Vincent Dreffs, Jr.

Jennifer N. Edwards
Dennis Elkins
Bret Fincher
Aaron Flinn
Danna and Bill Francis
Nadine M. Glass
Ashley Gold
Lindsay E. Gray
Ashleigh Hall
Andrew H. Hard
Lucy Hardin and Karen Baylor
Carrie Haslam
Tiffany L. Heller
Robert Hendrick
Jill Heyman
John Reggie Hill
Deborah Hollenstein
Karynn Hough
Lauren and Thomas Isenhour
Thomas Krutainis
Evelina Leece
Andrea O. Lindsey
Glenn-Lineberger-Wallace-Myers
Family
Corey Little
Leslie and Scott Little
Melissa and David Mahanes
Monica and Alec McDougall III
Tracy Montross
Anna Myint
Leslie and Scott Newman
Mary and James Perkins III
Aja Price
Stephen Ralph
Suzanne Rechter
Rod Reed
Emily Richardson
Ms. Erin Richardson
Laura and Greg Ritter
Dr. David L. Rowe
Jamie Scarbrough
Mary Jo and Steven Shankle
Jacqueline Shrago
Lori and James Shulman
Tamar J. Smithers
Marcy and David Spigel
Katie Talbot
The Blum Family Foundation
Anthony Tomlinson
Timothy J. Tucker and Peter L. Myles
Mark Valiquette
Vicki Vanderpool
Mary Welch
Christine Whitmore
Judy Wiens and Sally McFadden
Lisa and Kevin Williams
Beth and Richard Wise

\$100 - \$249

Anonymous (2)
Teri Alea
Matthew Shane Alvey
Carolyn Baca
Alexis Bell

Rebecca Bembry
Eric Billings
Mary and Frank Bishop
Courtney Blades
Sherry Blocker and Vicki Massey
Leslie Boone and Jim Harris
Karen and Robert Booth
Cherrie Britton
Patricia Brochier
Patricia Randall Brown
Ricky Brown
Michael Bull
Kevin Burge
Carol Burley
Shelby Cable
Christopher Corder
John Collins
Bianca Conley
Ruth Cordell
Mary Alice Cox
Melanie Crews
Aaron Crisler
Shelly Luter Crosby
Korrin Crossno
Brenda and Keith Lloyd Crow
Dylan C. Crowell
Melissa Culbreth
Andrew Denton
Christi Dortch
Emily and Chris Douglas
Barbara Dwyer
Josh Tyler Edmondson
Clara Elam
Rebekah and Tommy Estes
Karen and Warren Feist
Amber Foster
Carolyn and Jessie Foster
Gilbert S. Fox III
William Frazier
Sara Frederick
FW Publishing, LLC
Dr. Brian Gainous and Mrs. Hillary
Gainous
Addison Gail Galbreth
Jeannie and Alan Gaus
Jing Geng
Tracey George and Chris Guthrie
Todd Gerbert
Malcolm Glass and Mitzi Cross
Marlo Goff
Laura Goodenow
Darlene Goodin
Lori Goodman
Tiffany Goolesby
Timothy Gover
Nicholas E. Gulick
James N. Hadley
Breana Hall
William Haralson
Lauren Harper
Brian Harville
John and Heidi Hassenfeld Family
Foundation
Clint Higham

DONORS

Jean Hoff
Krista and Mark Hogan
Sally Holland
Sarah Horvath
Karen and Ronald Hoskins
Rhonda and Randy Howell
Gloria Humphrey
Orrin Ingram
Linda Jameson
Laura and Dave Janicek
Jane and Cecil Jones
Michelle Jones
Dr. Phillip Kemp
Robert Kennedy
Bonnie Konz
Barbara and William Krispin
Kroger
Nina Kumar
Elizabeth and Howard Lamar III
Linda and Chris Lance
Karen Land
J. T. Landry
Patsy Lanigan
Katie Lawson
Randy Lawson
Christy Lee
Sandra and Lawrence Lipman
Lynn Maddox
Kina Mallard
Frank Marco
Samuel Massey
Kim Matthews
Robert McAlister
Sandra and Dan McGrew
Owen McGuinness
Valerie Meadows
Daniel Mercer
Jeremy Mercer
Frank J. Miles
Michael W. Miller
Rebecca and Marshall Millman
Beth Anne Musiker
Lori and Wallace Nason
J. Dietz Osborne
Courtney B. Pannell
Lee Pedigo
Suzanne and Clay Petrey
Lee Pfund
Emily Philpott
Jonathan Pinkerton
Jillian Ratti
Kay and David Raybin
Debbie Reed
Caraline Rickard
Nancy and John Roberts
Kerri Santos
Makoto Sato
Corliss Savoie
Cathy B. Scott
Jennifer Sheets
Anthony Shipman
Alexander M. Shriner
William Shutes
Stephanie and Tracy Silverman

Dawn Smith
Michael Spaulding
Yolanda and Lelan Statom
Joycelyn Stevenson
Tim Strobl
Rebekah Tompkins
Blake Towe
James Stephen Turner, Sr.
Samuel Tyler
Mary Utley
Terri Lynn Weatherly
Heather and Angus Webber
Tammy Renee Whitehead
Debra F. Williams
Olivia Wollner
David Woods

Gifts in Kind

20Twelve
Academy of Personal Protection and Security
Adele's Restaurant
Adventure Science Center
Black River Outfitters
Bobbi Lipschutz
braidbabes
Chatt Taste
Cheekwood Estate & Gardens
Cielo Tequila
Club Pilates Maryland Farms
David Yurman Boutique
Dax and Kyle Langford
Debbie Garcia
Dry Farm Wines
drybar
Eddie V's
Erin Richardson
Etch
Fanny & June
FirstBank
Fizzah Raza Photography
Four Seasons Nashville Hotel
Gibson Guitars
Gus Mayer
Hatch Show Print
Jackalope Brewing Co.
Jamey Reed Fine Art
Janet Kurtz
Jeff Hopmayer
Jon Howard
Kendra Scott
Kimpton Hotels
Laura Amond
Leila Tsaroumis
Levy's
Lindell Jewelers, Inc.
Lipman Brothers
Mangia Nashville
Mary Skinner
Massage Envy Cool Springs
Massage LuXe
Mercedes Benz of Music City
Mint House
Minuteman Press

Mitch Stuart
Morph Hospitality Group
Nashville Ballet
Nashville Convention & Visitors Corp
Nashville Opera
Nashville Soccer Club
Niki Adams Art
Nothing Bundt Cakes
O.H. Ingram River Aged Whiskey
Parnassus Books
Plaid Rabbit & Properly Plaid
Premiere Transportation
Red Light Management
Robert Turner and Jay Jones
Robbie Lasky Fine Art
Rose Hill Florist
Ruby Falls
Ryman Auditorium
Ryman Hospitality
Scout Realty
Sheraton Grand Nashville Downtown
Shiners Nashville
Soft Surroundings at Green Hills Mall
Southall Farm & Inn
Sperry's
Susan Richardson
The Adventure Parks of Outdoor Ventures
The Blowout Co. of Nashville
The French Shoppe
The National Museum of African American Music
The Oak Ridge Boys
The Twelve Thirty Club
Thistle Farms
Tito's Vodka
TK and Laura Kimbrell
TKO Artist Management
Toyos Clinic
Tennessee Performing Arts Center
Twelve Thirty Club
Two Rivers Ford
Warby Parker
Wildhorse Saloon
Wildwood Resort & Marina

Gifts Made in Memory of the Following Individuals

David Compton
Peter R. Mould
Charles Earl Ogle, Jr.

Gifts Made in Honor of the Following Individuals

Ed Benson
Micah-Shane Brewer and Drew Ogle
Amos Glass
Rob Turner and Jay Jones



Learn to make
dishes from
your favorite
local chefs
and bakers!

Available now



*Let's get cooking!
Scan for more info*



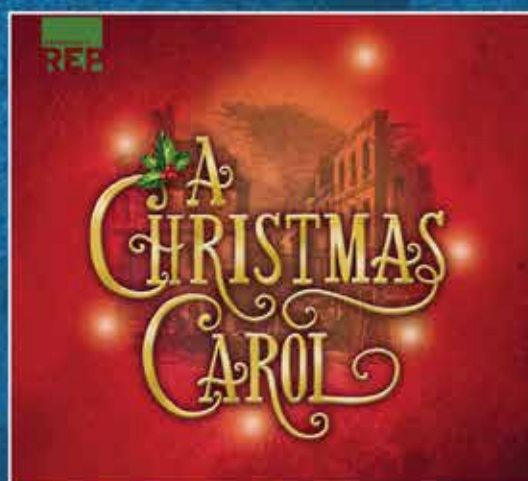
NASHVILLE

REP

23/24 SEASON



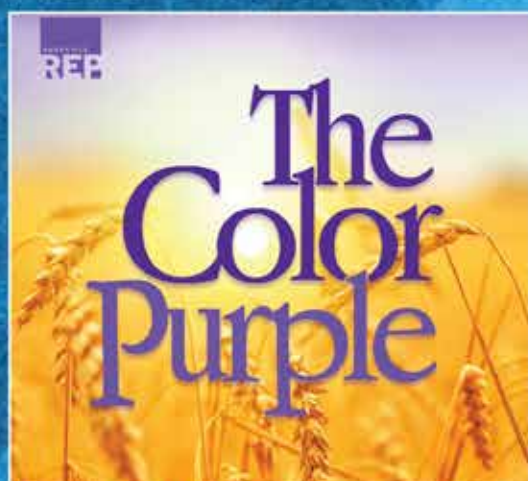
SEPTEMBER 8-17, 2023



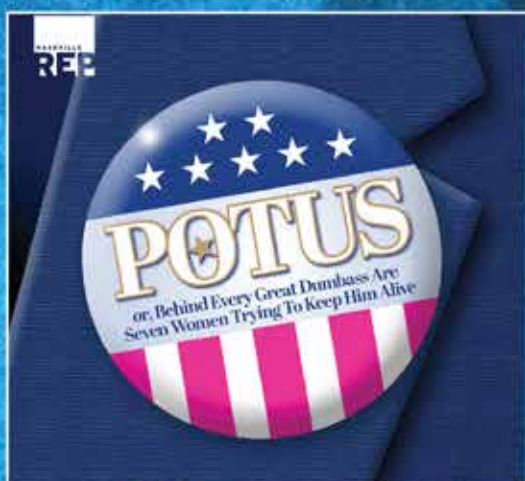
DECEMBER 1-17, 2023



FEBRUARY 2-11, 2024



APRIL 5-14, 2024



MAY 10-19, 2024

BE BRAVE!

TICKETS ON SALE NOW!

NASHVILLEREP.ORG | 615-782-4040



VERRAGIO

UNLIKE ANY OTHER RING



GENESIS  DIAMONDS

Best Jewelry Store | Best Place To Buy An Engagement Ring

13 YEARS & COUNTING